

# B<sub>ORA</sub> ●●●

Advanced care with a unique design

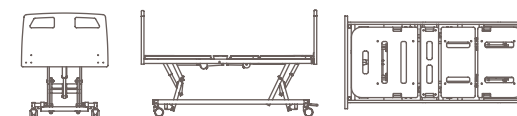


## Features

- Four-level adjustable electric powered bed and double electrically driven compass lifting system. Lifting range 23'5 - 83'5 cm to avoid injuries due to falls from the bed. The bed is movable at any height. High bed stability due to the length of the trolley and the double compass lifting system.
- Frame with dual regression prevents pressure ulcers (PU). The combined regression (14 cm) both in the chest and thigh sections relieves pressure on the abdominal and sacral areas respectively, preventing the formation of PU's for long-stay patients.
- 15° and 16° trendelenburg and anti-trendelenburg respectively, with horizontality sensor at any height.
- Four 100 mm double faired castors with simultaneous braking by means of a central lever. Swivelling position.
- Versatile in design, the Bora range of beds allows three different types of side rails to be attached to the bed base, offering different safety and mobility levels to the user.
- Supports on head zone of the bed for lifting pole and IV bags. Coated in polyamide to prevent noise and rust.
- IP66 protection linear drives ensuring a higher protection level than a standard motor in terms of liquids penetration that might damage the motor.
- Backlit hand control with pre-programmed therapeutic cardiac chair and CPR functions and function locking.
- In any of its configurations Bora bed is built according to the IEC 60601-2-52 standard.

## Technical Specifications

Total length with headboard & footboard.	<b>204 cm ± 1 cm.</b>
Total length with headboard & footboard ( <b>BoraMed</b> ).	<b>214 cm ± 1 cm.</b>
Total width with <b>telescopic side rails</b> .	<b>102 cm ± 1 cm.</b>
Total width with <b>continuous side rails</b> .	<b>104 cm ± 1 cm.</b>
Total width with <b>tube's side rails</b> .	<b>101 cm ± 1 cm.</b>
Height in low position.	<b>23'5 cm ± 1 cm.</b>
Height in upper position.	<b>83'5 cm ± 1 cm.</b>
Trendelenburg / Antitrendelenburg.	<b>15° / 16° ± 1°.</b>
Maximum patient weight.	<b>180 kg.</b>
Safe working load (SWL).	<b>270 kg.</b>



# ●●● BORA KALA



- Telescopic side rails.
- HPL bed base.
- Remote control with locking key.
- Double castors 100 mm; one of which swivels.
- Simultaneous braking lever.

Antimicrobial Coating



N° of sections	Total length	Total width	Height
4	204 cm	102 cm	23'5 / 43'5 / 83'5 cm
SWL 270 Kg	MPW 180 Kg	Trend / Antitrend Trend: 15° Antitrend: 16°	CPR Cardiac chair



## Bed exit stop

Automatic intermediate stop at 43.5 cm height from the ground, ensuring a suitable seat height for safe mobilisation. In addition, the upper side rail helps the user to stand up, providing a secure hold when standing up.



## Triple protection level

Double height side rails offer different protection levels to the user (no protection, partial or full protection), according to the user's autonomy and capacity at all times.

Each side rail is fitted with an individual locking and unlocking system



## Safety and quality

Telescopic side rails made from a combination of solid wood and aluminium, with no gap or central post. They offer full protection, covering the entire length of the bed base and allow different degrees of mobility assistance.



## Stand assistance

The upper side rails do not exceed the torso's articulation axis, serving as a support for the patient when standing.

# ●●● BORA Merak



- Wooden continuous side rails.
- ABS bed base.
- Remote control with locking key.
- Double castors 100 mm; one of which swivels.
- Simultaneous braking lever.

Antimicrobial  
Coating



N° of sections	Total length	Total width	Height
4	203 cm	104 cm	23'5 / 43'5 / 83'5 cm

SWL 270 Kg	MPW 180 Kg	Trend / Antitrend Trend: 15° Antitrend: 16°	CPR	Cardiac chair
---------------	---------------	--	-----	------------------

\*Common specifications for the whole Bora range



## Cardiac chair / Trend-Antitrend/ CPR

These positions are pre-programmed on the electronic controls. To improve the patient's ergonomics and safety, the movements required to achieve these positions follow a pattern of sequence and intervals.



## Lifting range 23'5-83'5 cm

The lower height position, 23'5 cm, reduces damage in the event of a fall while in the raised position, 83'5 cm, it eases the care staff's work.



## Foot positioning

The lower leg section can be adjusted independently by means of a gas spring.

This function is designed to help return blood flow, making this position particularly useful for long-stay patients or those with vascular problems.



## Dual auto-regression

The combined regression between the backrest and the leg rest, relieves the pressure in the abdominal and sacral zones respectively, preventing the formation of UPP's. It also provides greater comfort.

# ●●● BORA Class



- 4 folding tubes side rails.
- ABS bed base.
- Remote control with locking key.
- Double castors 100 mm; one of which swivels.
- Simultaneous braking lever.

Antimicrobial Coating



N° of sections	Total length	Total width	Height
4	203 cm	101 cm	23'5 / 43'5 / 83'5 cm
SWL 270 Kg	MPW 180 Kg	Trend / Antitrend Trend: 15° Antitrend: 16°	CPR Cardiac chair

\*Common specifications for the whole Bora range



## Simultaneous braking system

Can be driven from the footboard at any height of the bed. Provides extra safety and better accessibility for the nursing staff during their work.

Excellent patient lift access (13 cm).



## HPL bed base

HPL made bed base. Tool-free removable base for easy cleaning. Fireproof, waterproof, antifungal and highly scratch-resistant material.

Tool-free removable for easy cleaning and sanitizing.



## Horizontally sensor

Bed stops automatically, at any bed height, when the horizontal position is detected while switching from trendelenburg to anti-trendelenburg. Saves unnecessary movements and ensures patient comfort.



## ABS bed base

Bed made of ABS, medical grade plastic.

The lightweight material allows removing the bed with no tools, making it easier to clean and sanitize.

# ●●● BORA Med



- Hospital headboard & footboard.
- Bumpers.
- 4 folding tubes side rails.
- Accessories sockets (4 units).
- Zone for anchored fastening rings (6 units).
- Double castors 100 mm; one of which swivels.
- Simultaneous braking lever.

**Antimicrobial Coating**



N° of sections	Total length	Total width	Height
4	214 cm	101 cm	23'5" / 43'5" / 83'5" cm

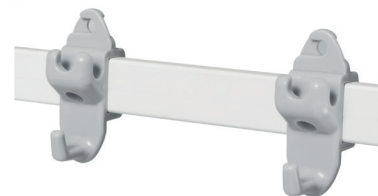
  

SWL 270 Kg	MPW 180 Kg	Trend / Antitrend Trend: 15° Antitrend: 16°	CPR	Cardiac chair
---------------	---------------	---	-----	---------------



## Bilateral protection

Folding rails made of four metal bars, self-locking in the raised position and unlocking by means of a double safety movement.



## Drainage holder supports

Both sides of the bed are fitted with bars with four plastic hooks, intended to hold drains, catheters, urine bags or accessories.



## Removable headboard & footboard

Tool-free, single-handed, easy to remove head and footboard made of polypropylene. Protective discs on the four corners, minimizing the minimizing the bed's wear and tear.

\* Customized vinyl is available as an option.



## Mechanical CPR

An emergency manual positioning system is located at the centre, on both sides of the bed.

# ●●● Available BORA Configurations

## Nursing control



Advanced nursing control unit with pre-programmed therapeutic and emergency positions: Safe exit, cardiac chair, examination position, emergency trend, CPR and automatic stop of the backrest at 30°.

LED lamps show user positioning, function locking and battery status.

●●● Valid for: Kala / Merak / Class / Med

## Nursing control + Patient control



Twin control unit combination, independent for each user.

The patient control can be locked by the nursing one so as to prevent misuse by bedridden users.

●●● Valid for: Kala / Merak / Class / Med

## Rechargeable battery



For easier operation when the bed is unplugged, or no power supply is available.

●●● Valid for: Kala / Merak / Class / Med

## Under bed light



The lighting is used to guide the bedridden user when getting out of bed at night, as well as to assist healthcare staff.

Additionally, it serves as an automatic LED to show the minimum bed height.

●●● Valid for: Kala / Merak / Class / Med

## Metal castors Ø 125 mm.



Swivelling 125 mm diameter metal castors. One of them is swivel.

These swivel castors make the bed heights to vary from a maximum height of 88 cm down to a minimum height of 28 cm.

●●● Valid for: Kala / Merak / Class / Med

## Bed extension



Manual bed extension system, extending up to 20 cm.

The bed can be adapted to any bedridden user, increasing comfort and well-being.

●●● Valid for: Kala / Class / Med

## Mechanical CPR



An emergency manual positioning system is located at the centre, on both sides of the bed.

●●● Valid for: Merak / Class / Med

## Stainless steel tube side rails



Four-tube stainless steel folding side rails, with automatic locking in the raised position and a double safety release system.

Removable or fixed to the structure.

●●● Valid for: Class / Med